

⚡ iblazr<sup>2</sup>

THE

MOST VERSATILE WIRELESS LED FLASH

FOR IPHONE, IPAD AND ANDROIDS



# ⚡ iblazr<sup>2</sup>

The second generation in the iblazr flash series, is the most advanced light source for smartphones and tablets available in the consumer market. This flash designed for smartphones also comes in handy when taking photos with tablets or DSLR cameras, lighting analogue photography, brightening nighttime video calls, or simply functioning as a small but powerful flashlight.

- Wireless syncing. iblazr 2 works with native camera apps on iOS via Bluetooth 4.0;
- Adjustable color temperature and brightness. Ability to adjust the light color temperature from **3200K** to **5600K** with the help of sensor on the back and the brightness using the app. Two constant light modes;
- Works as a selfie remote. iblazr 2 uses Bluetooth to replicate the effect of a camera shutter;
- Bright constant light for video taking on smartphones/tablets and digital cameras using the cold shoe mount;
- Multiple syncing. Use up to 10 iblazr flashes to enlarge the total amount of light.



Countries: **90**  
Backers: **4,022**  
Raised: **\$299,201**



# TRULY WIRELESS FLASH

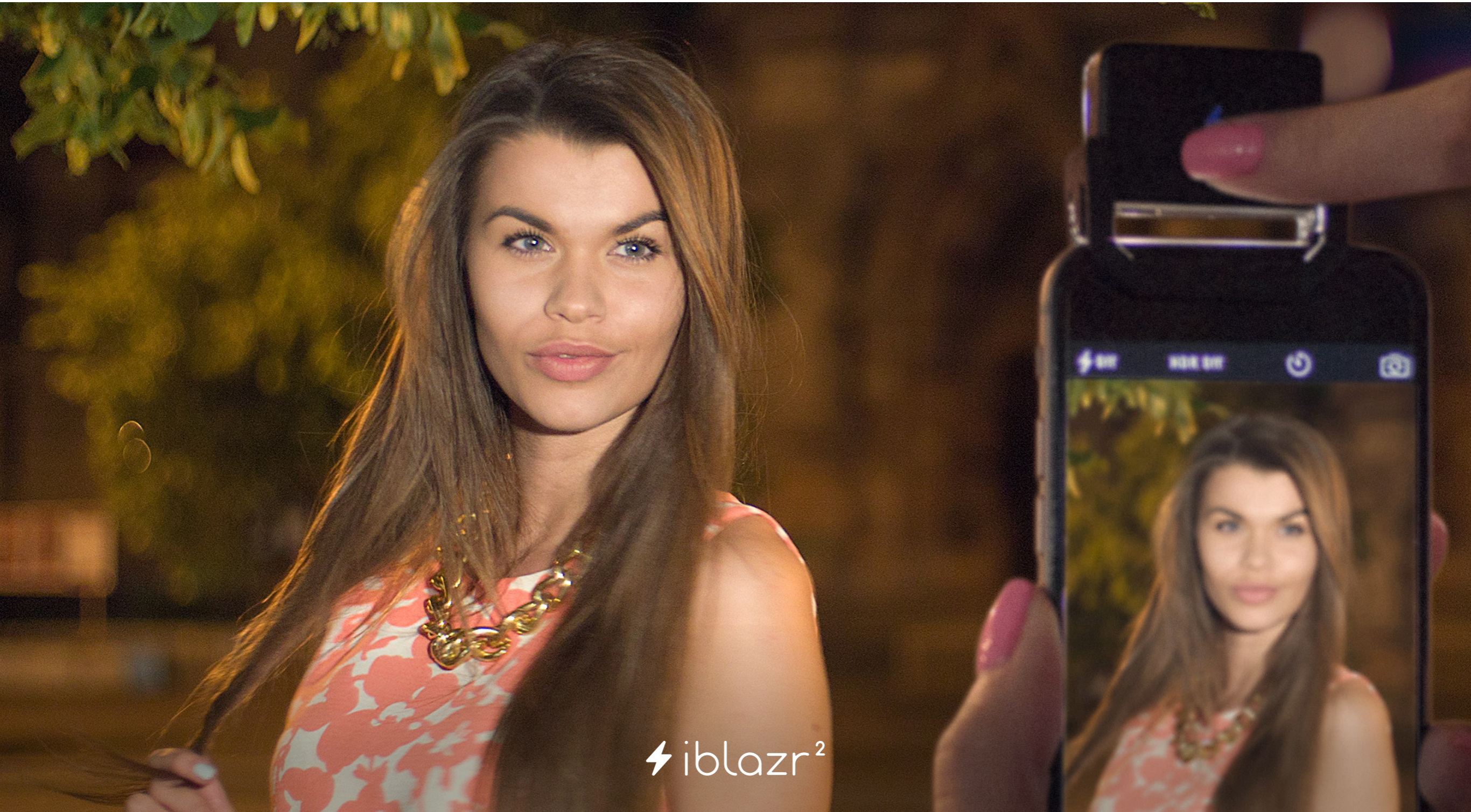
iblazr 2 is the most advanced wireless light flash on the market. iblazr 2 uses low energy technology Bluetooth 4.0 to communicate with your smart device at distance up to 15 m and sync the photo shutter with the flash.



⚡ iblazr<sup>2</sup>

# SENSOR COLOR TEMPERATURE ADJUSTMENT

iblazr 2 has a sensor panel for a more comfortable and intuitive user experience. This sensor lets you adjust the light color temperature from 3200K to 5600K to help you take better photos in every situation. Want to get up close for a fancy portrait? Choose your warm light setting. Need a powerful cold flash, instead? Change the setting to 5600K mode. This flexibility will allow you to shoot photos that look more natural, professional and creative.



# SYNCS WITH IOS / ANDROID NATIVE CAMERA APPS

You simply use Bluetooth to connect iblazr 2 to your smartphone, then launch the native camera app. By tapping the iblazr device twice, it will beam a powerful 300 LUX on 1m flash synchronically with your camera's shutter! That's absolutely magical.



⚡ iblazr<sup>2</sup>

# CAMERA REMOTE SHUTTER MODE

iblazr 2 allows you to capture every moment in its entirety. Connect iblazr 2 to your device via Bluetooth and start shooting from a distance in seconds. Put your iPhone down, step away, and make a great shot by double tapping on the device.



DOUBLE TAP  
TO TAKE A  
**PHOTO**

# BEST SELFIE LIGHT ON THE MARKET

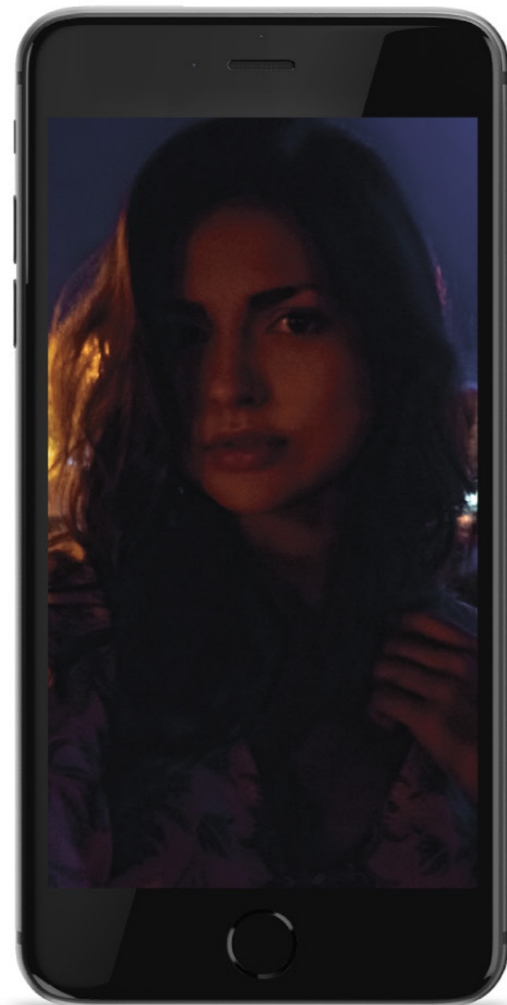
With the iblazr 2 you can set the light color temperature and light intensity. In this way you will get not a overexposed or dark photo, but a great shot.



⚡ iblazr<sup>2</sup>

# ⚡ iblazr<sup>2</sup>

- NATURAL LOOKING SKIN TONES
- SOFT SHADOWS
- PHOTOS WITH DEPTH



with no flash



with iblazr 2 flash



⚡ iblazr<sup>2</sup>

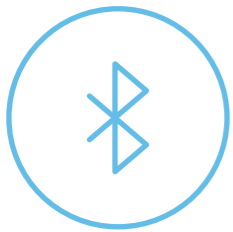
## MULTIPLE SYNCING

With the help of special application, you can instantly connect up to 10 devices and create incredible light performance or just semi-professional home photo studio.



⚡ iblazr<sup>2</sup>

## FEATURES



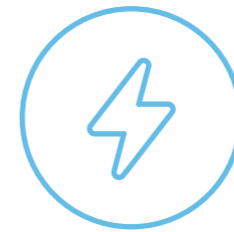
Bluetooth



130 mAh battery inside



Temperature adjustment



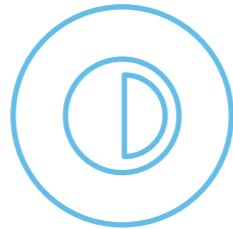
300 flashes on charge



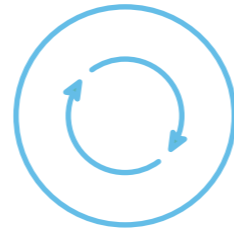
Touch sensor



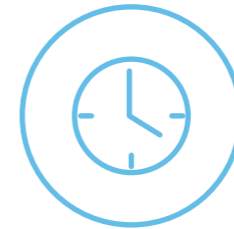
Shutter remote



Brightness adjustment



Native app sync



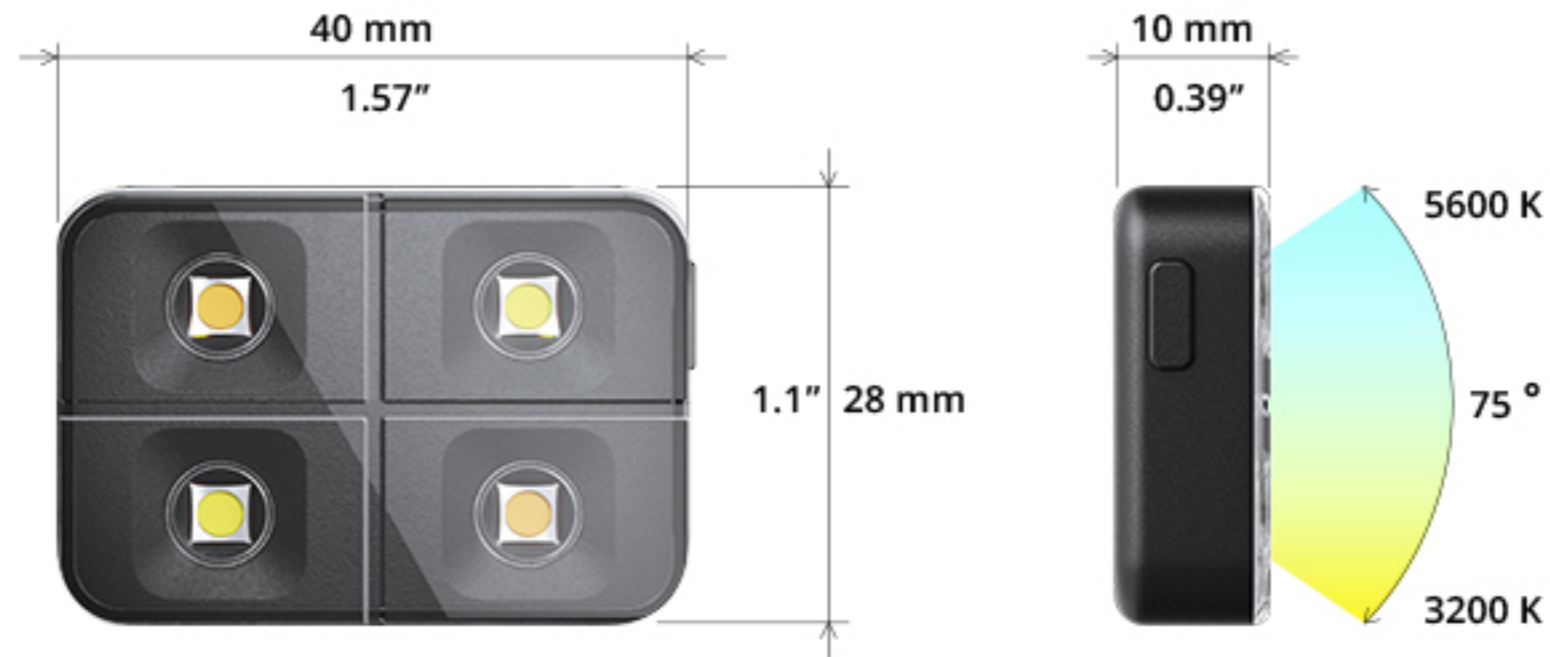
3 hours of work



No red-eye



## TECH SPECS



Illuminance (power of light):  
Flash mode - up to **300 Lux** at 1m  
1st power mode - **20 Lux** at 1m  
*(similar to smartphone flashlight)*  
2nd power mode - **120 Lux**



LED color temperature:  
from cold **5600K** to warm **3200K**



Battery capacity: **130 mAh**  
*(approx. equal to 300 flashes)*



Constant light duration:  
1st power mode - up to **3 hours**  
2nd power mode - up to **30 minutes**



Dimensions and Weight:  
**1.57" x 1.1" x 0.39"**  
**40mm x 28mm x 10mm**  
**0.7 ounces (20 grams)**



Bluetooth smart syncing:  
Works with native camera apps  
& Shotlight companion app



Temperature sensor:  
to prevent the overheating



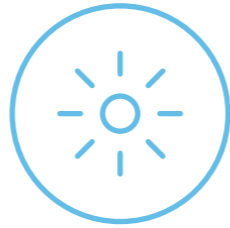
How to charge:  
Micro USB to USB charging

⚡ iblazr<sup>2</sup>

# SHOTLIGHT APP TO ENLARGE IBLAZR 2 POSSIBILITIES



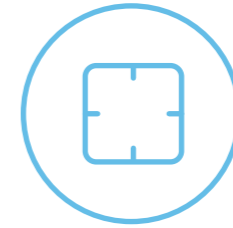
ISO



White balance



Exposure,  
EV compensation



Focus



# ⚡ iblazr<sup>2</sup>

## RETAIL BOX AND COLORS AVAILABILITY



BLACK



PEARL GRAY

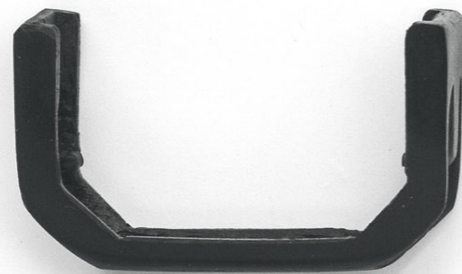


WHITE



## ACCESSORIES IN THE BOX

- USB CHARGER
- MOUNT CLIP
- SILICON DIFFUSER
- KEY CLASP
- QUICK START GUIDE



⚡ iblazr<sup>2</sup>

## LONG FLEXIBLE CHARGER

Can be purchased separately

Not only does the flexible charger charge the flash, it also functions as a lamp stand allowing iblazr 2 to provide illumination in a variety of situations even when your not taking photographs. The new flexible charger is now 15.75 inches (400 mm) long and able to hold not just an iblazr flash, but a heavy smartphone as well.





## PACK OF COLORED DIFFUSERS

Can be purchased separately

Professionals say that the best light is a soft light. We say the best light is the one that is with you! That's why we made a silicon diffuser with a small hole to fit on your key ring, so now you will never forget your iblazr at home. Now available in a pack of 5 colors — Vibrant Orange, Classic Green, Flame Scarlet, Raspberry Rose and Brilliant Blue.







# LOVED BY THOUSANDS

Countries where iblazr can be bought



⚡ iblazr<sup>2</sup>

TRUSTED BY MILLIONS



**Mashable**

**TNW**

**TE** TechCrunch

**WIRED**

engadget 

